



# StreamView



## Continuous High-Speed Streaming Video

### Don't let production failures keep you down

StreamView is a high-speed camera capable of streaming 640x480 (VGA) video at 250 frames-per-second or 1280x720 (HD) video at 90 frames-per-second. Designed for monitoring production and packaging lines, sports analysis, and surveillance, StreamView can be setup for use with a computer's hard disk array to record for hours on end or to burst to computer memory for several seconds. Give us your recording and frame-rate specifications and SVSi will deliver a complete digital video recording system.

### Applications

- Troubleshooting machinery
- Monitoring production lines
- Sports Analysis
- Weapons Testing
- Surveillance

### Features

- 1280 x 1024 max resolution
- Variable frame-rate
- High speed shutter
- Auto-exposure
- Externally trigger-able
- Complete easy-to-use software for video record and playback



### Implementation

The first step in recording digital video with StreamView is deciding where to store the digital video. For several seconds of record time, storage to host PC SRAM is most practical and cost effective. A PC with 1-GB of RAM and a gigabit ethernet adapter with jumbo frame support can use half the available memory to record 640x480@250-fps for 6-secs. If longer record times are required, the host computer must have a RAID array. Record times of 8-hours are possible with SVSi's streaming computer system. Available in both desktop and ruggedized portable configurations, each system has been fully tested and integrated before leaving the factory.

***Southern Vision Systems, Inc.***

*8215 Madison Blvd, Suite 150*

*Madison, AL 35758*

*Phone: (256) 461-7143 ♦ Fax: (256) 461-7145*

*[www.southernvisionsystems.com](http://www.southernvisionsystems.com)*

*email: [info@southernvisionsystems.com](mailto:info@southernvisionsystems.com)*

StreamView

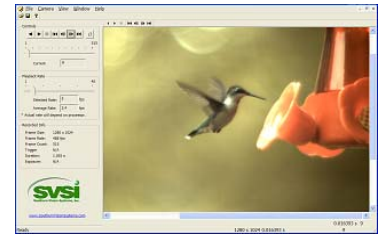


## Auto-exposure

StreamView's auto-exposure mode dynamically adjusts for changing light conditions over long record times. During set-up, a target frame is recorded under the appropriate lighting conditions and auto-exposure enabled. If clouds move in, the sun changes position, or bulbs burn out during recording, StreamView automatically changes the exposure by over 2000x to keep the image histogram at that of the target frame. Auto-exposure is just one more feature engineered into StreamView to decrease the possibility of missing a critical event.

## Software

StreamView comes with complete software that makes recording and playing back video a snap. Select frame-rate, frame-size, and storage media with the Record Wizard then click go. StreamView software takes care of controlling the camera, dynamically adjusting the frame-rate to match the data bandwidth of the interface and storage media, storing to the selected media device, and playing back the digital video. Recorded parameters are displayed for all video files and video can be cropped to select only the frames of interest. Output formats are AVI, raw, sequence of bitmaps, tiff, png, and jpg.



## Specifications

Imager: 1280x1024 CMOS monochrome or color

Frame Size (hor x vert)	Frame Rate (Hz)
1280 x 1024	65
1280 x 720 (HD)	90
640 x 480 (VGA)	250
320 x 240 (QVGA)	1,000
160 x 120	4,000

Lens: 1" C-mount  
Shutter speed: 2- $\mu$ sec to 300-msec  
Auto-exposure: standard  
Ext Trigger: 5V TTL or switch closure (marks frame for playback)  
Analog Out: RS-170 w/ text overlay  
Interface: Gigabit Ethernet (jumbo frame support required for higher frame-rates)

Frame Storage:  
Host memory: 1/2 of the available RAM in host (6-secs for 1-GB RAM)  
RAID disk array: Up to 8-hours continuous recording

Power: +5V @ 1A max  
Weight: 2.5-lbs  
Volume: 4.25"x4.25"x4.25"