

# PIXIE compact digital cameras

- 1.3 / 2 / 3 MegaPixel resolution
- Up to 30 fps
- 60dB dynamic range
- USB2.0 or IEEE1394a (Firewire) data interface
- Low power consumption
- Excellent price / value ratio



Similar to the highly successful AOS high speed cameras, these compact digital cameras are extremely robust and reliable.

## Key features

- 1.3 / 2 / 3 MegaPixel resolution
- CMOS image sensor
- Low power consumption
- Standard USB2.0 or IEEE1394a (Firewire) data interface
- Sophisticated Software Development Kit (SDK)

## Advantages

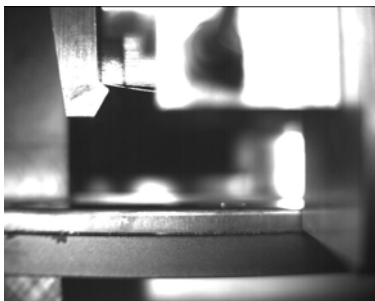
- Excellent price / value ratio
- Finally a real alternative to existing cameras
- Precise motion analysis due to superior image quality
- Free SDK support

## Applications

- Quality inspection
- Line inspection
- Surface inspection
- Research applications
- Semiconductor manufacturing
- Credit card manufacturing

## Accessories and Services

- Strobe lights (red, white, amber, IR)
- Optical systems and lenses
- Camera mounts
- Application Software Development
- Turnkey system design / integration



## Specifications:

	<b>Pixie 1 PX1300..</b>	<b>Pixie 2 PX2000.C</b>	<b>Pixie 3 PX3000.C</b>
Resolution	1280x1024	1600x1200	2048x1536
Pixel size	5.2umx5.2um	4.2umx4.2um	3.2umx3.2um
Sensor type	Progress scan CMOS	Progress scan CMOS	Progress scan CMOS
Sensor size	1/1.8"	1/1.8"	1/1.8"
Frame rate	15 fps@1280x1024 (30 fps@640x480)	10 fps@1600x1200 (15 fps@1280x1024) (30 fps@640x480)	6 fps@2048x1536 (10 fps@1600x1200) (15 fps@1280x1024) (30 fps@640x480)
S/N	>45dB	>42dB	>42dB
Dynamic range	60dB	60dB	60dB
Sensitivity	1.6V@550nm/lux/S	1.2V@550nm/lux/S	1.0V@550nm/lux/S
Exposure mode	ERS	ERS	ERS+Snapshot
Synchronization	External trigger or free run	External trigger or free run	free run or external trigger mode Level Sensitive snapshot Edge Sensitive snapshot Edge Sensitive ERS
Output	USB 2.0 / IEEE 1394a	USB 2.0 / IEEE 1394a	USB 2.0 / IEEE 1394a
Max. cable length	4.5m (72m with repeaters)	4.5m (72m with repeaters)	4.5m (72m with repeaters)
Program control	Image size / Brightness Gain/Frame rate Exposure time	Image size / Brightness Gain/Frame rate Exposure time	Image size / Brightness Gain/Frame rate Exposure time
Lens adapter	CS-mount and C-mount	CS-mount and C-mount	CS-mount and C-mount
Power requirement	5V(USB2.0) / 12V(IEEE 1394)	5V(USB2.0) / 12V(IEEE 1394)	5V(USB2.0) / 12V(IEEE 1394)
Power consumption	<3.8W	<3.8W	<3.8W
Dimension	54.5x54.5x41.5(USB2.0) 61.5x61.5x46.5(IEEE 1394)	54.5x54.5x41.5(USB2.0) 61.5x61.5x46.5(IEEE 1394)	54.5x54.5x41.5(USB2.0) 61.5x61.5x46.5(IEEE 1394)
Weight	195g(USB2.0)	195g(USB2.0)	195g(USB2.0)
Weight	250g(IEEE 1394)	250g(IEEE 1394)	250g(IEEE 1394)

## Type code:

PXnnnn U .	USB2.0 Data Interface
PXnnnn F .	IEEE1394a Data Interface
PXnnnn . C	Color sensor
PXnnnn . M	Monochrome sensor

AOS Technologies AG  
 Taefenstrasse 20  
 CH-5405 Baden-Daettwil  
 Switzerland  
 Phone +41 56 483 34 88  
 FAX +41 56 483 34 89  
[www.aos.ch](http://www.aos.ch)  
[info@aos.ch](mailto:info@aos.ch)

